


KIWAI SCRIPT

**HIMARA IMEHE GO TB
KO'OMIRITI DARU RUDO**

**YUMI BUNG WANTAIM NA
RAUSIM TB LONG DARU**



COMMUNITY EDUCATION HANDBOOK



Dear _____

Thank you for your commitment to educating the people of Daru about TB.

This book is a guide to help you give awareness on TB.

It includes:

- Steps for planning your awareness session
- Tips for giving awareness
- A script to follow for awareness
- Information on common questions about TB
- A space to record information about your sessions

The TB team member who is supporting you is

Their contact number is

Contact them if you have any questions or would like any help.

STEPS FOR PLANNING YOUR AWARENESS SESSION

Follow these steps to help your preparation go smoothly...

- 1 Discuss with your group an ideal day and time for the awareness.
 - 2 Arrange a suitable location that is big enough for the group size.
 - 3 Inform your TB team support person of your confirmed time and venue.
 - 4 Remind group members when it gets close to the date.
 - 5 Prepare the venue space and any equipment needed (eg. speaker)
 - 6 Practice your awareness presentation.
-

TIPS FOR GIVING AWARENESS

Take some deep breaths before you start to help settle you.

Enjoy yourself! If you are relaxed and happy your participants are more likely to engage.

Speak loudly and clearly - use a sound system if available.

Keep your participants interested with questions and discussions.

Give participants the chance to ask questions - verbally or in writing if they don't feel comfortable speaking up.

TB INFORMATION

This information can be given during the awareness or can be used if participants ask for it.

2 Billion people, or one quarter of the world's population, are currently infected with TB infection (Sleeping TB).

In Daru, around **90%** of people who are diagnosed with TB complete their treatment- this is one of the highest completion rates in the world. This shows strong commitment from people on treatment and good support from the community and TB program.

In 2021 Around the world more than **10 Million** people were diagnosed with TB disease.

In PNG **28,200** people were diagnosed with TB disease.

In Daru, **443** people completed treatment. Another **424** people were diagnosed with TB.

SUGGESTED AGENDA FOR AWARENESS SESSION

Activity	Description	Lead
Survey of TB understanding	Survey with a small group to check their understanding of TB before the awareness Done while participants are arriving	TB staff member
Welcome and introductions	<ul style="list-style-type: none"> • Welcome to the session • Introductions of the group • Explanation of the session 	You
TB education	Education on important TB information using: <ul style="list-style-type: none"> • Flipchart • Script in this guidebook • Giant lungs 	You
Questions and discussion	<ul style="list-style-type: none"> • Questions invited in writing or verbally • Discussion of answers 	You and TB staff member
Closure	<ul style="list-style-type: none"> • Thanks to the participant • Closure of the session s 	You
Repeated survey of TB understanding	Survey repeated with same small group to check their understanding of TB after the awareness Done while other participants are leaving	TB staff member

SCRIPT FOR AWARENESS

This script is designed to be used with the SWEEP-TB community education flipchart. The words in orange are a guide for you and don't need to be said. The blue words are questions that you can ask the group.

Introduction

Himara ni hiwio eboro sa'i nouwa ai naradabuaimo, imehe moto na'u na'u wa gi temeteme (TB) rerea nou baraito kiaruguti kisiodiro gido.

Karawageremai gido, moro aine kodu arua TB temeteme baraito imowapotai. Nou wapo gabo rudo, nigo tagu ne iwaha, karatoro kisio diro gido.

Arua kodu nigo mabuto narogumo ro oribotai tatohe, nimo umorogo augiwai, nimogo kimodobuti minaito ai nemisiodiromo.

1 Turn to Flipchart page 1 TB BETUROGO?

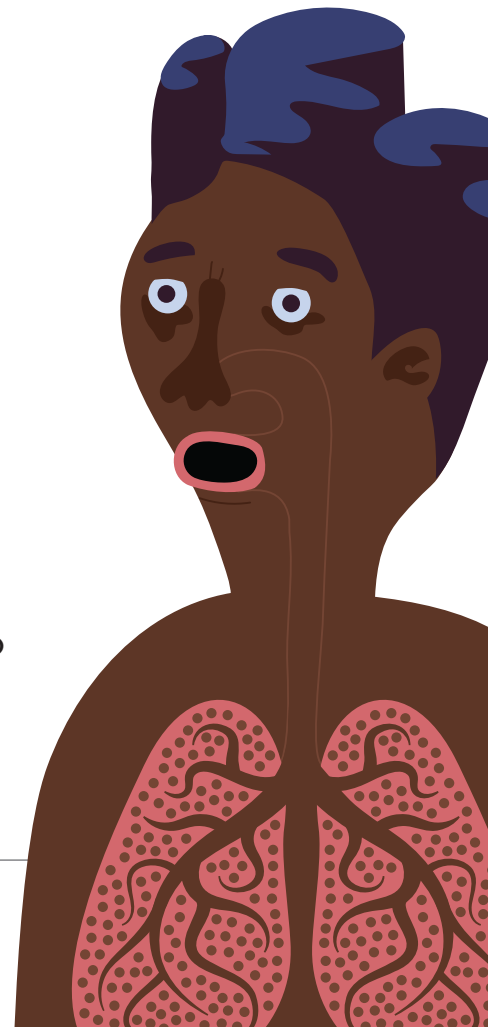
Tuberculosis eboro TB ereago Temeteme go. Nou TB poku rudo worosiodiro. Tagara tagu rudo kogu uomu ni Tagu nou Kerebai, ni temeteme nou nanito rerea geda emehe dirimoro patupatu wa ha'arubi ai riwaiado uba go imehe urato patu wa.

Ata adi owera rerea geibo, TB temeteme modoboie kopia TB Meresin to.

2 Turn to Flipchart page 2 TB SPREADS THROUGH THE AIR

Boturo TB temeteme rau mina nou pai TB Meresin idio ni temeteme nou kopia gido. Nou kose eboro achio karogowa, gi huhuwo epuru wemeriai nou ro, TB poku goi wogumo gi huhuwo epuru nou nirowa. Gi TB poku modoboie, temeteme tato hawa'ana ro, huhuwo epuru mutu kimowiodoi. TB Poku aime wori'iria gi temeteme tato hawa'ana nou Hahai niroito. Himara durupi nirowa, Hahai ro wawarebai hawa'ana huhuwo epuru kimade gido.

TB temeteme ro modoboie imehe etere etere ha'arubi kiobai.



3

Turn to Flipchart page 3

EPURU KORODOROMAI (MINO)

Huhuwo epuru TB poku rautu kimowiodoi wato. Gi TB Poku ai wogu hawa'ana hahai nirowa muro go koiti. Himara durupi koro murai arima (body defense) ro uba ai woribotai, durupi aime woromurai TB poku koroborogo gaute.

TB poku Hahai wa murogo koiti wa. Go nou Epuru korodoromai ye. Hawa'ana pai temeteme ngado rau karao eboro nou pai temeteme rautu komi geda nou durupi erapo he werea. Go TB Temeteme nou epuru korodoromai hawa'ana durupi ito (infection).

4

Turn to Flipchart page 4

TB TEMETEME

Durupi koromurai arima (immune system) erapo tato go koitiwa eboro erapo karawameaiwa, TB poku erapo go aiwoifiri. Durupi Koromurai Arima ro gi ara wowogu, TB poku ro ai wihebuti. TB poku aime woroborogo hawa'ana durupi wa. Gonou gi tagu nouwa warawa humai temeteme geda ro woribotai geibo hawa'ana nou temeteme rautu. Go TB temeteme ia ye.

5

Turn to Flipchart page 5

TB MINO**TB koribotai mino;**

- Kose- netewa tupata geda netewa hiwio uomu to
- Kesu opi arima rau
- Gabu gabu
- Oiwo ibi
- Duwo araha
- Durupi kagari
- Mere baibigo pai koroio geda ubi tato kiriho

Kawitato he ye temeteme mino botuwa werea, wade hobo'bohe kogu temeteme mino komomidai gido, TB temeteme kohora moto ito (Blue house)

Pai nania kawitato he kerea hawa'ana temeteme ro kuwotodoi, dogo temeteme mino aime Komomidai. Ni mino nouwa, TB Temeteme kopia gido gi meresin ro keregedio go pai koiti adiminoito TB poku kopia gido.

Damarito ata hawa'ana keauriwa, TB temeteme mino rau nirimagare wade nou kawarebai eboro kawabogoi TB mino Komomidai gido.

6

Turn to Flipchart page 6

TB TEMETEME KOHORA GEDA KIRAERAI GIDO

TB testing is free and is done at the blue house at the hospital. The health care Imehe TB Temeteme kohora woko kisiodiro gido Temeteme Komohora Moto (Blue House) wa, wiha pai ye. Keregedio ha'arubi goiye ro kawarebai Magata orobere (Sputum) geda Hahai Wuriona (Xray) komidai TB temeteme kohora gido.

TB Temeteme nanihe kowea wa dogo hawa'ana TB meresine wa nouwato wedeamo.

Temeteme hawa'ana ro meresin ai widio na'u tupata nau ganumi (6 months) eboro netowa urato (2years) nirowa. Ni meresine kimade uomu ai rarapoi TB temeteme erapo uomu ro.

Kawitato he werea hawa'ana TB mino hobobohe komomidai, meresin aime kiwageremai emehe hiwio ito, TB poku kopia gido geda hawa'ana kawitato go koiti.

Daru ura nirowa, ro pai wia go koiti imehe TB meresin kimade hopu wa.

7

Turn to Flipchart page 7

TB TEMETEME DARU NIROWA

PNG nirowato, TB temeteme ha'arubi uomu Daru ura wa ohu iaito rea. Mina TB Komohora geda Kiraerai keregedio erapo iyato rerea geda. Imehe hiwio ha'arubi kawitato go ai roitiadomo ni temeteme rau rudo. Ni uratoro goroporigai (2021) awehe ha'arubi meresin kimade tagu ai giporigai mo. No adi'ia kawitato ye. Go na'u awehe ha'arubi umehe goi rirobai TB temeteme ro.

Goi ye na'u Gabo TB temeteme kimowiodoi eboro Temeteme uomu koworuo nanito Daru Ura wa. Wade imehe moto patuwa, ha'arubi imehe wa, TB temeteme komohora woko kisiodiro. TB temeteme Ha'arubi geda Uwo TB ha'arubi gido meresin aime kiaguwuti.

TB komohora keregedio minaito goiye korosiodiro ni Ura ere nou wa. Wade himara Namuturubi imehe kiwogu ni keregedio nou mabuto.



8

Turn to Flipchart page 8

NAMUTURUBI KIRIMURA TB GAUTE

Wade nanito kimaragidiro – TB temeteme ai woroborogo huhuwo epuru nirowato. Namuturubi modoboie temeteme gaute Kirimurai nimino nouwato.

- Motogabo gedda huhuwo gabo (windows) wade Kidoburuti. TB poku hiwio enaena ro ai wipia gedda huhuwo ro moto niro rudo huruito Kihuderai.
- Pai ha'arubi kubi/popo niroito kodoro gedda badibadi tanaro hopuwa kidabuti.
- Namutu hawa'ana ata TB meresin ina ridio, ro wade kodu kisiodiro nou erapo go kawai gedda kawarebai nou meresin kimade nirowa.
- Wade adiadi pari oruhuna gedda arimina kiriho durupi erapo gido.

9

Turn to Flipchart page 9

NETOWA NA'U (3) KIMARAGIDIRO

1. TB temeteme hobobohe kowa wa mina hawa'ana meresin aime kawageremai kidio uomu koporigai, TB iyopu modoboie kopia gedda Temeteme hawa'ana kawitato go ai wotiri.
2. Ni gabo wade kobodoro ro namuturubi kirumurai ni temeteme nou rudo gedda boturo TB mino rautu wade kemeriai temeteme komohora gido.
3. Himara namuturubi mutu wade kogumo ni TB temeteme kohora keredio nou wa, umoro go koiti geibo temeteme goira himara wa eboro pai.



Common Questions about TB



These are questions that the participants may ask about TB. Some information is given to help you answer.

Question: TB budodo gogu?

Answer: Tagara tagu rudo uomu Dogehe, TB nou nanito rerea. TB epuru kowe Egypt dirimoro wa, nei uparu dorupi (mummy) nirowa. Arua habara wa buka owera wa goi ye. Nou gonou rudo goroborogo uomu dogehe.

Question: TB bedabeda he gogu Daru ito?

Answer: Urato patupatu wa, TB goi gerea ni Daru Ura nou wa. Tagara taguwa, atau hawa'ana TB temeteme rau goi gogu nou dirimoro rudi ni temeteme nou rau. Gonou gi tagu nouwa goroborogo TB poku ha'arubi mabuto Daru ura wa. No sobo ia ura ere ye geda ha'arubi tatari tatari he rorowomi mo. Gonou mabu ni TB poku hobobo ia Koroborogo gido.

Question: TB gara giwari go?

Answer: Pai. TB ereago temeteme go, arua temeteme gi minoito. Nou TB poku (germs) rudo worosiodiro geda huhuwo epuro wa woroborogo. Meresin ro modoboiye kopia.

Common Questions about TB

Question: Modobo'ra Otapaha (herbs) ro TB temeteme kopia?

Answer: Pai. Nau TB meresin ro re TB Opia. Arua temeteme gi minoito, nei himara meresin ro re ipia.

Question: Durupi koromurai arima (immune system) erapo tato go bedabeda he woiti?

Answer: Durupi koromurai Arima (immune System) awehe tanaro wa woitiri erapo tatogo; no arua ye

- Arua temeteme kori'iria wa. Giminoito diarrhoea, HIV, leprosy
 - Pai adiadi kiriho
 - Mi'ibo durupi/dopi orobo
 - Gamada ra suguba tatari tatari he kidio
-

Question: Modobora TB temeteme kiriho numabu eboro tu karaudo wa kirehuwai ata hawa'ana mabuto?

Answer: Pai, TB temeteme nau huhuwo epuro wa woroborogo. Nou Pai oborotama geda Kiriho numabu kirehuwai wa koroborogo.

Note: Ro umoro tatohe hawa'ana karatoro kamwameai, dau gamwameai dorogarahe. Ro nou umorogodawai geibo ro karatoro geda kohora woko taugo re isiodiro dogo aimere arawameai nou mabuto.

Ro TB keregedio namutu hawa'ana goi re ogu roro mutu ro kawarebai gido ha'arubi karatoro kimwameai gido.

Awareness session information

Please fill out this information every time you do an awareness session and share it with your TB team support person.

Day	Time	Participant Group	No. of Participants (M/F)

Awia esso roro gido.

Thank you for doing your part to
Sweep TB out of Daru for good!

