

NSP Snapshots Study

Results from the first one-week snapshot: February 2020

The NSP Snapshots study aims to identify service use trends and describe service user experiences, needs and outcomes of Victorian Needle and Syringe Programs.



We aim to compare data across different regions of Melbourne, analyse data for emergent trends over time, and provide quarterly reports to services, service users and other stakeholders.

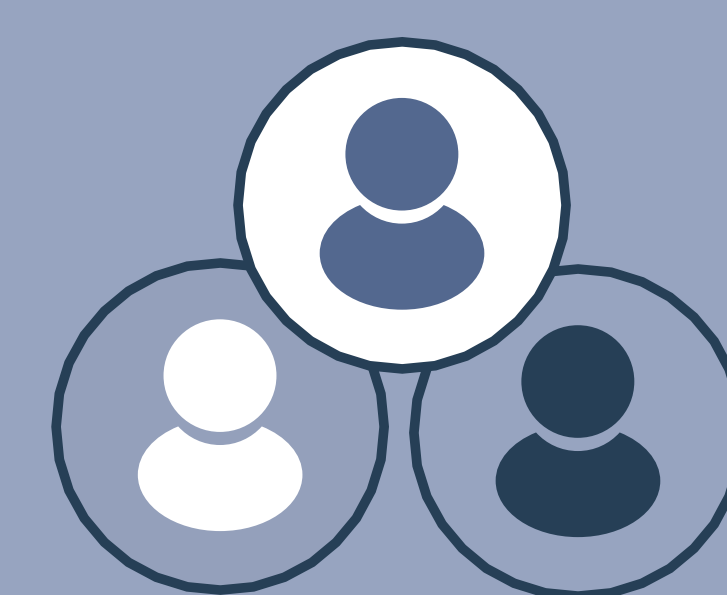


NSP Snapshots will be completed in quarterly blocks



Round 1 (February 2020):
59 service contacts from Healthworks Footscray
657 service contacts from Access Health St Kilda

More NSPs are planning to join the study throughout the year



12%

identify as Aboriginal and/or Torres Strait Islander

Footscray (5%)
St Kilda (13%)

15%

of clients identify as LGBTIQ+

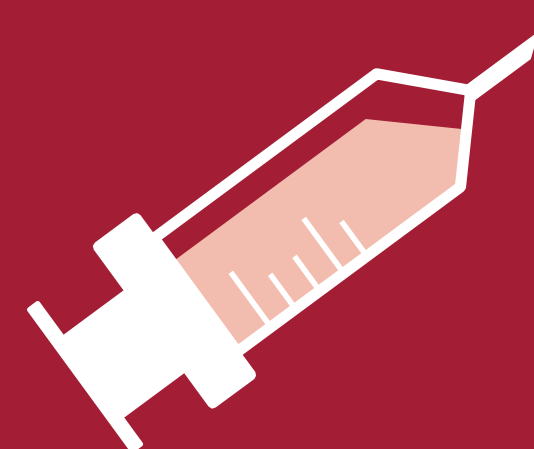
Footscray (12%)
St Kilda (15%)

38%

had a parent born overseas (one or both)

Footscray (46%)
St Kilda (37%)

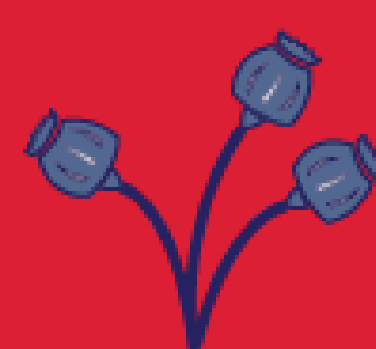
Last drug injected:



Footscray:

St Kilda:

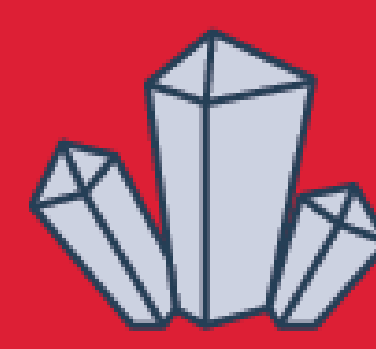
Heroin



70%

54%

Meth/amphetamines



25%

37%

PIEDs



2%

4%

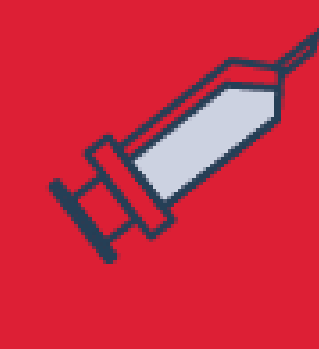
Pharmaceuticals



2%

3%

Other



2%

2%

Other: cocaine, ketamine, mixtures | PIEDs: Performance or Image Enhancing Drugs