



Burnet Institute
Medical Research. Practical Action.

Myanmar



Burnet Institute is an Australian, unaligned, independent, not-for-profit organisation whose purpose is to improve the health of disadvantaged, poor or otherwise vulnerable people throughout the world.

Linking medical research with public health action, Burnet Institute's unique approach enables us to make a tangible and sustainable impact on health in both developed and developing countries.

Since 2003, Burnet Institute has been actively involved in Myanmar and committed to achieving better health care and services for communities. Burnet Myanmar is the Institute's largest country program. More than 130 public health professionals and social research scientists, with organisational development and monitoring and evaluation expertise, are involved in our programs.

OUR GOAL

Burnet Myanmar strives for effective public health intervention and research excellence in communicable and non-communicable diseases, maternal, neonatal and child health, and adolescent health through strategic and functional partnerships with civil society, international agencies and national health programs.

HOW WE WORK

Under a Memorandum of Understanding with the Myanmar Ministry of Health, Burnet Myanmar is active in all 14 States and Divisions.

We adhere to the World Health Organization's definition of health as a state of physical, mental and social well-being, and believe that health is a fundamental human right. Our approach to health development includes rigorous analysis of needs, interventions based on evidence, building local skills of both civil society and partner governments to strengthen the enabling environment, and the participatory evaluation of impact.

Our implementation approach includes service delivery and capacity building both with, and through, a range of local and international partners, including the Myanmar Government. We have an extensive network of partnerships with local and community based organisations, including faith-based organisations, and civil society networks and associations. We collaborate and partner with Government health staff and systems at the national and local level, UN agencies, international NGO consortiums, and domestic and international public health institutes.

WHAT WE DO

SECTORAL PRIORITIES 2014 TO 2016

Infectious diseases

We engage with local partners and government to work with key affected populations to address HIV, sexually transmitted diseases and blood-borne viruses through prevention, care and treatment.

The Myanmar program utilises Burnet Institute's global expertise to respond to malaria, tuberculosis and emerging infectious diseases as prioritised by the Myanmar Ministry of Health, building on, and collaborating with, our broader HIV and maternal, neonatal and child health programs.

Maternal, neonatal and child health (MNCH)

We advocate for, and help build, stronger health systems, community knowledge and skills to improve the health of women and children. Our programs respond to the Myanmar Ministry of Health's MNCH Essential Service package to improve services and promote greater engagement of men in sexual, reproductive, maternal and child health.

Adolescent health

A new sectoral focus for our program from 2016, the Myanmar Government is prioritising the needs of

adolescents in the area of sexual and reproductive health, primary and secondary education, vocational training and economic opportunity. Burnet Institute also recognises that disruption of encultured gender inequities can be addressed with this population to minimise gender-based violence. We will work on behaviour change in this area, and on improving access to information and services for sexual and reproductive health. Programming for adolescents will be prioritised through schools.

Integrated themes

Burnet Institute recognises that basic rights to clean water and sanitation, safe, nutritious and adequate food, and environmental health, are crucial to sustainable public health outcomes and quality of life.

Gender, advocacy and partnership are fundamental to our rights-based approach. We have activities in gender, advocacy and partnership training, and established networks for local and international organisations.

Monitoring, evaluation and quality assurance

Burnet Institute has dedicated resources for monitoring and evaluation,

both at the national and international level. Practical experience is used along the designing, monitoring and evaluating (DME) continuum. We take a participatory approach to DME through working with partners and local teams to develop plans, monitoring and evaluation frameworks, and systems. These tools enable us to track implementation and assess performance. This maximises the accessibility, relevance and use of M&E data and reports, generated from our Myanmar program and wider international best practice.

Research priorities

Working in line with the national research policy and priorities, Burnet Myanmar is expanding its research agenda across operational and primary research to inform program and policy development for civil society, national programs and international development stakeholders.

The Department of Medical Research is our main collaborator in delivering training, collecting data and increasing our knowledge across sectoral priorities. Environmental health will be further explored and developed to complement Burnet Myanmar's niche role and Myanmar's public health priorities.

130+
staff

15
projects

86
townships

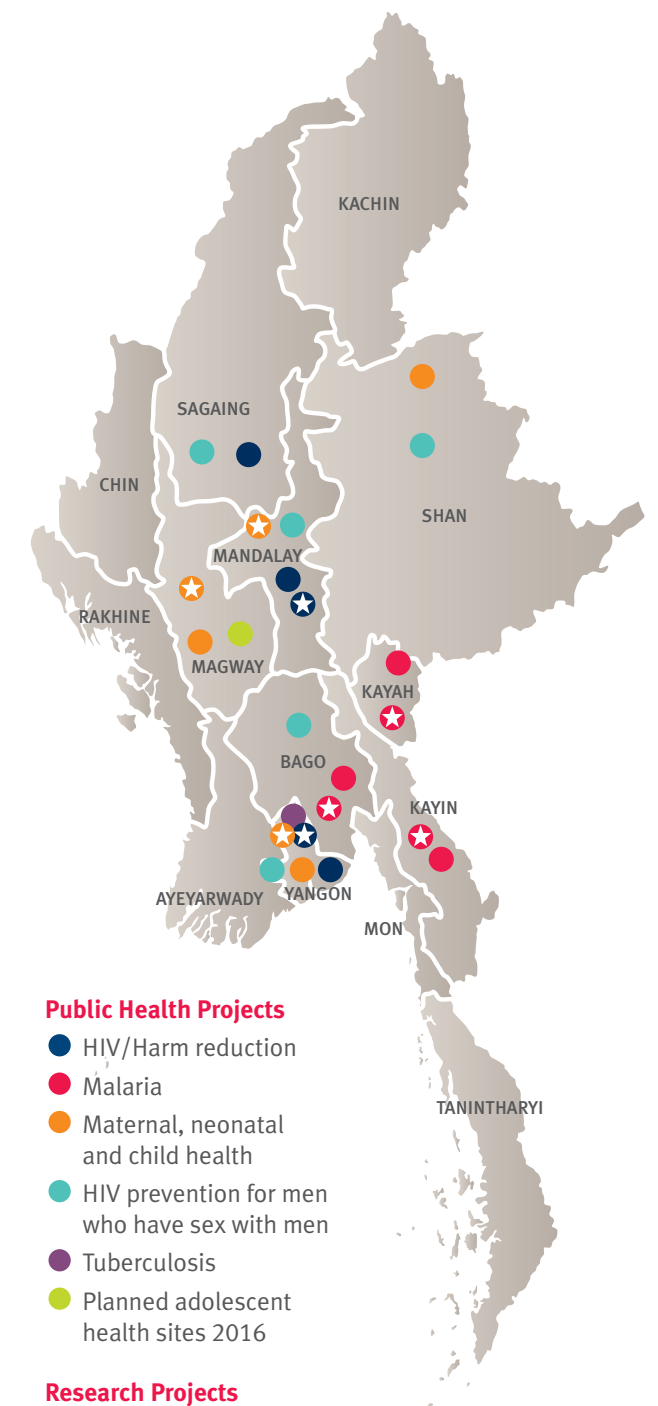
ALL States
and Divisions

13 NGO
project-based
partners

16
networking
partners

480,000+
people have
benefitted
from our HIV,
TB, malaria,
and maternal
and child
health work

BURNET'S PROJECTS IN MYANMAR



Public Health Projects

- HIV/Harm reduction
- Malaria
- Maternal, neonatal and child health
- HIV prevention for men who have sex with men
- Tuberculosis
- Planned adolescent health sites 2016

Research Projects

- ★ HIV
- ★ Malaria operational research
- ★ Maternal, neonatal and child health



FUNDING BODIES

- 3MDG – 3 Millennium Development Goals
- ANCP – Australian NGO Cooperation Program
- GF – Global Fund
- Australian Aid



MYANMAR

Contact: Dr Phone Myint Win,
Country Director
No.226, 4th Floor, Wizaya Plaza U
Wisara Rd, Bahan Township Yangon,
Myanmar
Tel: +95 (01) 375785
Email: phonemyintwin@burnetmyanmar.org

AUSTRALIA

Head Office
85 Commercial Road
Melbourne, Victoria, 3004
Tel: +61 3 9282 2111
Fax: +61 3 9282 2100
Email: info@burnet.edu.au

 [/burnetinstitute](https://www.facebook.com/burnetinstitute)

 [@BurnetInstitute](https://twitter.com/BurnetInstitute)



Burnet Institute
Medical Research. Practical Action.

burnet.edu.au